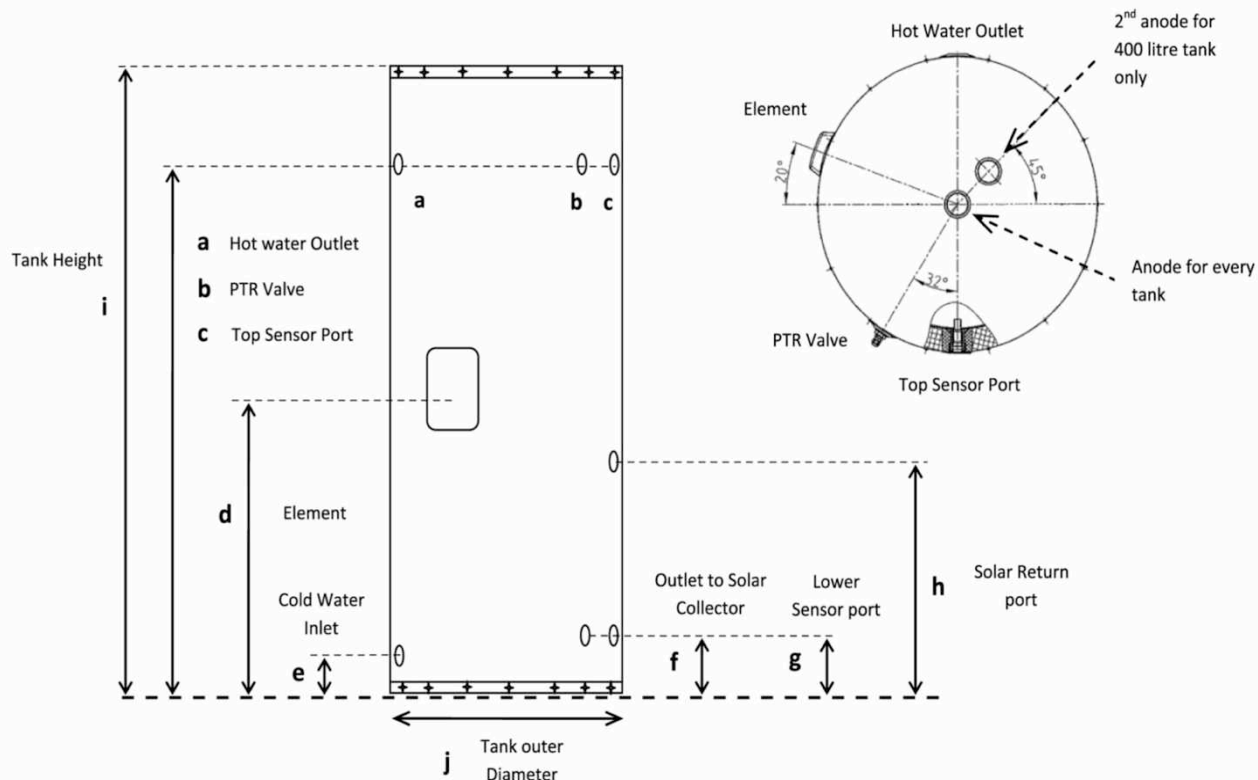


Vitreous Tanks



Australian owned
and designed

SolarArk Vitreous Enamel Tank



Solarark	Model Number	VE250136	VE315136	VE400136
Tank	Storage Capacity	270 litre	340 litre	450 litre
a	Hot Water Outlet	1161	1464	1464
b	PTR Valve	1161	1464	1464
c	Top Sensor Port	1161	1464	1464
d	Electric Element	654	761	691
e	Cold Water Inlet	74	74	74
f	Outlet to Solar Collector	180	180	180
g	Lower Sensor Port	180	180	180
h	Solar Return Port	530	530	530
i	Tank Height	1398	1700	1713
j	Overall Diameter	648	648	730



www.solarark.com.au
1300670966
info@solarark.com.au

